

# The chemical composition of Amazonian plants (\*)

A catalogue, edited by Setor de Fitoquímica, INPA, Manaus, Amazonas

FAMILY :

SPECIE

LAURACEAE

*Ocotea cymbarum*  
(H.B.K.) Nees

OCCURRENCE : Manaus, Amazonas

TRUNK WOOD :

$\alpha$  - Phellandrene

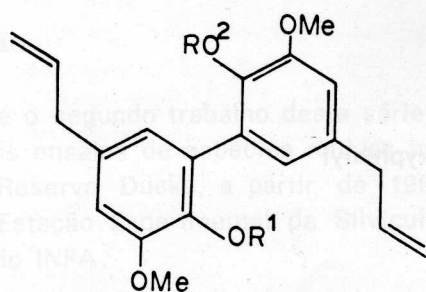
$\alpha$  - Pinene

Eugenol

Dehydrodieugenol [ 5,5'-diallyl-2,2'-dihydroxy-3,3'-dimethoxydiphenyl ] (1a).

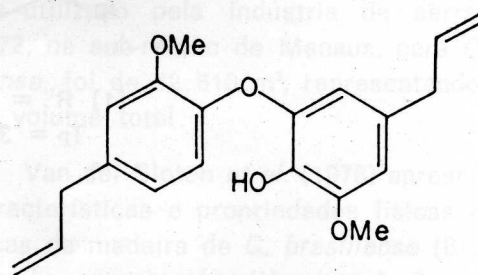
Dehydrodieugenol monomethyl ether [ 5,5'-diallyl-2-hydroxy-3,2,3'-trimethoxydiphenyl ] (1b).

Dehydrodieugenol-B [ 4,5'-diallyl-2'-hydroxy-2,3'-dimethoxydiphenyl ether ] (2).



1a  $R^1 = R^2 = H$

1b  $R^1 = H, R^2 = Me$



2

## REFERENCE :

Aura M.P. de Diaz, Hugo E. Gottlieb and Otto R. Gottlieb (1980) *Phytochemistry* 19, 681-2.

(\*) — Contributions to this catalogue, which will be continued in subsequent issues of this Journal are invited and should be submitted to address above.

FAMILY :

SPECIE

LAURACEAE

*Nectandra* sp.

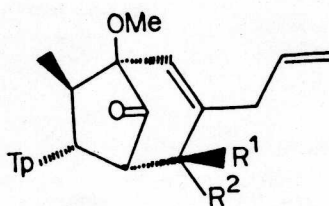
OCCURRENCE : Manaus, Amazonas

TRUNK WOOD :

Mirandin-A neolignan [2]

Burchellin-type neolignans [3,4]

Macrophyllin-B (7R,8R,2'R,3'S,5'S)- $\Delta^8$ -2'-Hidroxy-3,4,5,5'-tétramethoxy-2',3',4',5'-tetrahydro-4'-oxo-7.3'.8.5'-neolignan). (1).



(1) R<sup>1</sup> = H, R<sup>2</sup> = OH

Tp = 3,4,5-trimethoxyphenyl

REFERENCES :

1. Raimundo Braz Filho, Roberto Figliuolo and Otto R. Gottlieb (1980) *Phytochemistry* 19, 659-662.
2. Aiba, C. J., Gottlieb, O. R., Pagliosa, F. M., Yoshida, M. and Magalhães, M. T. (1977) *Phytochemistry* 16, 745.
3. Gottlieb, O. R. (1978) *Prog. Chem. Org. Nat. Prod.* 35, 1.
4. Aiba, C. J., Fernandes, J. B., Gottlieb, O. R. and Maia, J. G. S. (1975) *Phytochemistry* 14, 1597.